



ABOUT US

HATEKS

EKAT&CUPAL

Founded in 2009, ARO YAPI shortly became a respected and growing construction firm based in İstanbul/Turkey in his multi-national projects all around the world from Kazakhstan-Asia to Senegal-Africa. At the same time, Almaty Kazakhstan Branch was founded in order to enter Kazakh market.

While ARO YAPI provides a full range of building construction services, primary focus is front of house (FOH) hotel, retail, themed restaurant and specialty is FIT OUT projects. ARO YAPI typically serves as General Contractor providing FIT OUT services on Turn-Key basis to some of the most prominent corporations doing business in Kazakhstan. As General Contractor, ARO YAPI serves as a trusted advisor, ensuring that there is a constant focus on the client's goals and best interests. Fit outs are often more complicated to undertake than new construction because in most cases the buildings in which the space exists are occupied and open for use. ARO YAPI minimizes the disturbances such as noise, dust and debris on their sites, so that property owner's high-end facilities can continue to function with minimal disruption while construction moves forward.

By 2023, ARO YAPI moved his existing good, contract-based client-vendor relations with HATAY TEKSTIL ISLTETMELERI A.Ş. and EKAT Tekstil A.Ş. to the next step by establishing further cooperation.

ARO YAPI has built its reputation around servicing the most exclusive and fashionable clients. ARO YAPI's clients demand finished spaces exhibiting top quality fit and finish to complement their world class products and services. Also ARO YAPI serves the Clients in field of Value Engineering as it has both a large international market knowledge from which supplies variety of materials and also great experience on design for cost saving. The unsurpassed ability of ARO YAPI to ensure a high- end fit and finish while moving projects quickly and smoothly from design through construction and on to handover is one of the reasons why so many of ARO YAPI's clients are repeat customers.



REFERENCES

HATEKS

EKAT&CUPAL

Hill International

PAC-0001.01/HL/AM
No: UTR005A2711
Turco Investment Group
Turco Avenue 18
Astana, Kazakhstan

Hill International
1211 Karayeva str.
Business Center Voldro-Zheleny Boulevard, Office 602
Tel: +7 7172 755 166 / 755 299
www.hillintl.com
Astana, Kazakhstan

13.02.2018

To: Response Required
Copy: YES NO

Subject: Letter for Successfully Completion of Fit-Out Construction Services
Ref:

To Whom It Concerns,

This is to certify that "GARANT STROY SERVICE LLP" has worked as Fit-Out Contractor at "Hotel The St. Regis Astana" Project.

"GARANT STROY SERVICE LLP" has provided professional services at the proper level, qualitatively in accordance with the Customer's requirements, norms and standards applied in the Republic of Kazakhstan.

I would like to put on record my sincere appreciation for "GARANT STROY SERVICE LLP" team for their dedicated effort and hard work.

We look forward to your co-operation in our future projects

Yours sincerely,

Murat Mazi

Project Manager
Murat Mazi

Hill International
13.02.2018
RECEIVED
ПРОЦЕДУРА

Hill International

PAC-0001.01/HL/AM
No: UTR005A2710
Turco Investment Group
Turco Avenue 18
Astana, Kazakhstan

Hill International
1211 Karayeva str.
Business Center Voldro-Zheleny Boulevard, Office 602
Tel: +7 7172 755 166 / 755 299
www.hillintl.com
Astana, Kazakhstan

13.02.2018

To: Response Required
Copy: YES NO

Subject: Letter of Appreciation of Health Safety & Environment (HSE) Services
Ref:

To Whom It Concerns,

This is to certify the achievement of 320,000 Man-Hours without any lost time incident at the construction site of "Hotel The St. Regis Astana" Project.

We would like to put on record our sincere appreciation for "GARANT STROY SERVICE LLP" team for their dedicated effort and hard work.

"GARANT STROY SERVICE LLP" has never given us grounds for complaint. We can recommend them highly and look forward to your co-operation in our future projects.

Yours sincerely,

Murat Mazi

Project Manager
Murat Mazi

Hill International
13.02.2018
RECEIVED
ПРОЦЕДУРА

hambrechtolsen
design inc.

March 13, 2014

RE: Ali Riza Bilen and ARO Yapi

To whom it may concern,

The purpose of this letter is to acknowledge the professional relationship we as an architectural firm have had with Ali Riza Bilen, when we completed the Saks Fifth Avenue store in Essential Mall in Almaty, Kazakhstan in Fall 2012. Ali is an outstanding creative professional who we have had the pleasure of working with since 2010 as we developed the store interiors of this 11,000 square meter luxury retail store. One of our major clients is Saks Fifth Avenue, based in New York, who we have completed 6 stores internationally with many different contractors over the last decade. Working with Ali and his team stands out as an excellent experience. He is very knowledgeable, professional and eager to get the job done efficiently and to our standards. Our project was often challenging, but we worked very closely with Ali, who was diligent in meeting the schedule and organizing the various trades to accomplish this wonderful store. We highly recommend working with him on any retail construction project, especially with his experience in Kazakhstan.

Please do not hesitate to contact me if necessary to elaborate on our experience with Ali. Thank you for your consideration.

Sincerely,

Karen Oleson

Karen Oleson
Creative Principal

26 park road, shorehills, NJ 07078
telephone: 973.236.9100
www.hambrechtolsen.com

iDA Group

Koktem-1, 15a office 402
Almaty / Kazakhstan
Phone: +7 701 537 9400
Fax: +7 727 930 9444

13 March, 2014

Letter About:

Ali Riza Bilen
Managing Partner
ARO YAPI Insaat Taahhit Sanayi ve Digi Tic. Ltd. Sti.
Dumankaya Ikon A3 Blok K:24 D:117
Atasehir-Istanbul-TURKIYE

Re: Letter of reference.
To whom it may concern:

It is with great confidence that I put forward this recommendation of ARO YAPI and its Managing Partner Ali Riza Bilen. Our firm worked with ARO YAPI and their company founded in KAZAKHSTAN with the decoration project of CP OFFICE in Almaty, Ritz Carlton Tower in Essential Complex, but more to the point we have worked with Ali Riza Bilen for over 4 years it is Ali Riza's integrity and commitment to his clients that I am recommending.

What you can expect from ARO YAPI is a streamlined, honest process built upon open communication and thorough market/industry knowledge that dramatically simplifies the construction process. They are a partner to be relied upon from the start of a project, in the concept/budget development phase, through punch out, and on through the life of the building.

Our vast experience with Ali Riza/ARO YAPI is just one example of the commitment that they have made in developing lasting relationships built upon integrity and mutual respect.

I welcome any specific inquiries to support my recommendation of Performance Construction.

Sincerely,

Daniyar Kabdulin
Managing partner
d.kabdulin@ida-group.com
www.ida-group.com



QUALITY POLICY- HSE POLICY- HSE OBJECTIVES



QUALITY POLICY

ARO YAPI management hereby undertakes to take and follow up all necessary precautions to ensure that all company activities comply with any legal obligations in the country and region worked as well as with the requirements of any domestic and foreign organizations to which it is a member, with international agreements and with any contracts signed with employers and with specifications.

ARO YAPI adapts to act its "Right First Time" principle and "Plan, Do, Check, Act" philosophies for its Projects.

For the purpose of ensuring the permanency, maintenance and continuity of the established management systems and the precautions taken as well as proving in an objective manner that the systems are implemented adequately and effectively according to ISO 9001, ARO YAPI shall measure the performance of employees and processes by means of international audits and any other methods and have them reviewed and assessed by the Top Management.

Realization of continuous improvement is the basic purpose of the established management systems. Targets are determined in line with the purpose, programs for all management systems are created in line with such purpose and targets, authorization and responsibilities of persons are described and the continuity thereof is ensured by training, instructing and auditing works.

ARO YAPI knows that the secret of the success depends understanding and satisfying the present and future requirements and expectations of the existing and the potential customers as well as of and users. Hence the principle of customer-focus is adopted in all activities.

ARO YAPI establishes relationship with suppliers and partners to develop and facilitate communications for the purpose of improving the effectiveness and efficiency of value-creating processes. It also creates effective and efficient processes to evaluate the developments of exist or to be selected suppliers, subcontractors or partners and their capabilities in supplying the required products as well as to ensure customer satisfaction.

ARO YAPI establishes and determines the measuring conditions for all of its manufactures. Measurements and monitoring on products are planned and realized for the purpose of verifying the fulfillment of the requirements of relevant parties. Any information obtained there from is used to improve the manufacturing processes.

ALI RIZA BILEN
Architect
Managing Partner



HEALTH, SAFETY AND ENVIRONMENTAL POLICY

By the involvement of all employees. ARO YAPI Construction Management aims zero incidents during construction activities to ensure. No harm to people, Damage to Property and an Environment including third parties under the philosophy of a continuous improvement and in compliance to local law and International standard requirements of OHSAS 18001:2007 and ISO 14001:2004

ARO YAPI acts in accordance to the following principles to be able to achieve the aforementioned goals.

- Preparation of activity risk assessments & determination of an environmental aspects and hence to apply required safety measures to completely eliminate identified hazards or to minimize them to a tolerable risk levels by adhering the requirements of local HSE law and regulations
- Determination of an measurable annual HSE Objectives and targets and to achieve them by encouraging the involvement of all employees .
- To inform all employees regarding:
 - HSE Applications,
 - Annual measurable and achievable objectives and targets ,and
 - The ARO YAPI HSE Policy

• Within the scope of this HSE policy, ARO YAPI Top Management reviews the studies periodically to ensure continuous development and to ensure total involvement to fulfill the requirements of this policy and revise them when required.

We as ARO YAPI Top Management perceive all studies that will be done on behalf of Health , Safety and an Environment as our prestigious objective and primarily set a high value for **HUMAN and ENVIRONMENT**.

ALI RIZA BILEN
Architect
Managing Partner



HEALTH, SAFETY AND ENVIRONMENTAL OBJECTIVES

General Objectives

- To ensure the establishment of a preventive culture through training, communication and incentive activities carried out with construction and subcontractors workers on the basis of taking responsibility in H&S applications.
- Carrying out the necessary resource planning relevant to Occupational Health and Safety.
- Making regular inspections about H&S on site and ensuring that the work is done according to the rules.
- Working with public and civilian organizations in establishing an H&S culture.

Short Term Objectives

- Ensuring that site personnel and Subcontractors personnel work according to the H&S Management System.
- Ensuring the carrying out of an H&S risk assessment during pre-construction activities and the reducing of hazard sources.
- Carrying out an emergency drill in every year.

Long Term Objectives

- Completing the project with no accidents resulting with fatality or severely injured persons.
- To receive no penalties within the framework of Health & Safety from Legal Organizations and Institutions.
- Making the necessary arrangements for the Project. Top Management to set aside at least 10% of their time for H&S issues.
- Ensuring the continuation and improvement of H&S applications until the end of the Project.
- Measurement on site performance at regular intervals.
- Being successful at Internal Audits and Performance measurements.
- Completion and effective application of Risk Assessment processes for activities on the Work Program (including Mob. and Demobilization) and other auxiliary works (offices, dining halls, dormitory, etc.). [The inclusion of preliminary activities for critical activities for which Risk Assessment has been carried out and the preventive measures decided upon have been taken, and the stipulation that the main activity shall not start before the activity has been completed).

ALI RIZA BILEN
Architect
Managing Partner

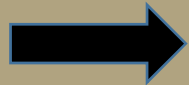
OUR ACTIVITY AREAS :



PROPERTY DEVELOPMENT



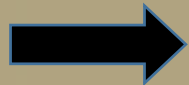
TURN-KEY, FAST TRACK, FIT-OUT SOLUTIONS



CURTAIN DESIGN & APPLICATIONS 



HOTEL TEXTILE 



STRUCTURAL WORKS

TEPEOREN VILLAS –TUZLA/ISTANBUL

ARO YAPI converted his real estate investment in Tuzla Region to a boutique project with 9 triplex private luxury villas. ARO YAPI is both the land owner and the contractor of the Project. The villas rest on 4.900m² of land, which has beautiful scenery of the valley view. There is a gross area of 270 m² for each villa. The on-going construction did start by December2023 and planned to be completed by December2024.

Technical Specifications

- Compliant with Earthquake Regulations
- Diesel Generator
- Thermal Insulation
- 24/7 Security
- CCTV Camera System
- Big garden and swimming pool







OUR ACTIVITY AREAS :



PROPERTY DEVELOPMENT



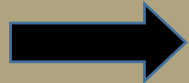
TURN-KEY, FAST TRACK, FIT-OUT SOLUTIONS



CURTAIN DESIGN & APPLICATIONS 



HOTEL TEXTILE 



STRUCTURAL WORKS



**TURN-KEY, FAST TRACK,
FIT-OUT SOLUTIONS**

HATEKS

EKAT&CUPAL

THE St. REGIS HOTEL KAZAKHSTAN-ASTANA

Located in the heart of Astana, within the city's most lively park, the riverside complex consists of symmetrical Hotel and Residence Blocks. There is a total construction area of 55.000 m², 27.500m² of which is Hotel Block.

The interior decoration works of all Public Area (Lobby, Restaurant (3), Ballroom, Reception, Lobby and Ballroom Toilets, Banquet Room, Main Ladder and Elevator Hall, Meeting Rooms) and SPA with total covered area of 6000 m² are delivered by us in Turn Key base. The materials are brought from Turkey and Europe. The project was opened in September 2017.

ARO Yapı prepared all shop drawings and detail design drawings as per his application and material experience. This experience enables value engineering and cost saving detail solutions.

All design evolution process took place with coordination of project's British and European design teams. The MEP coordination and careful superpoze of all discipline drawings were carried by our side.





TURN-KEY, FAST TRACK,
FIT-OUT SOLUTIONS

HATEKS

EKAT&CUPAL





TURN-KEY, FAST TRACK,
FIT-OUT SOLUTIONS

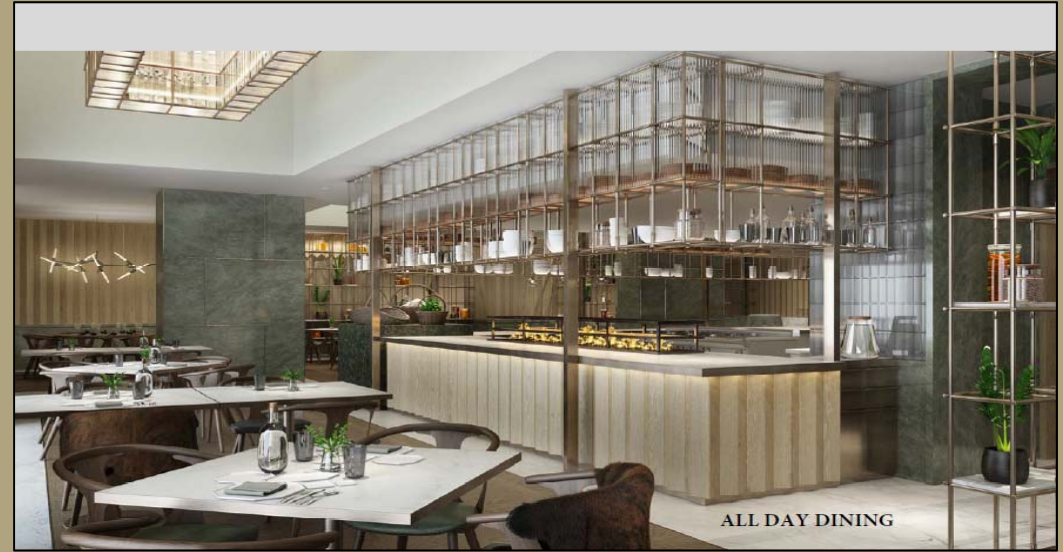




TURN-KEY, FAST TRACK,
FIT-OUT SOLUTIONS

HATEKS

EKAT&CUPAL



EMAAR SQUARE / ÇAMLICA / ISTANBUL

The Address Project is the last phase of the Emaar Square Project at İstanbul, which is an multi proposed real estate investment of Emaar Properties PJSC, one of the world's leading real estate development companies. Located at the center of the Asian side of the city, the 50-storey The Address Istanbul will feature THE ADDRESS HOTEL on its first 11 floors. The next 18 floors, named as THE ADDRESS RESIDENCE ISTANBUL will be come to 197 fully furnished luxury residences serviced by The Address Hotel, while the upper 17 floors are dedicated to 123 luxury residences as THE ADDRESS RESIDENCE SKY VIEW ISTANBUL, with floor plans ranging from 1 bedroom to 5 bedroom units, as well as luxury penthouses. Estimated finish date of the project is the end of 2020. All finising works of the project are executed under Aro Construction responsibility with all material labor shopdrawing, etc.. Some of the working items executes are listed below;

- Aerated Block Wall Works
- Gypsumboard Wall Works
- Satin plaster
- Paint works
- Screed Works
- Ceramic Works
- Epoxy Works
- Floor Covering
- Wall paper
- Suspending Ceiling
- Metal stair handrail
- Terazzo Stair Covering



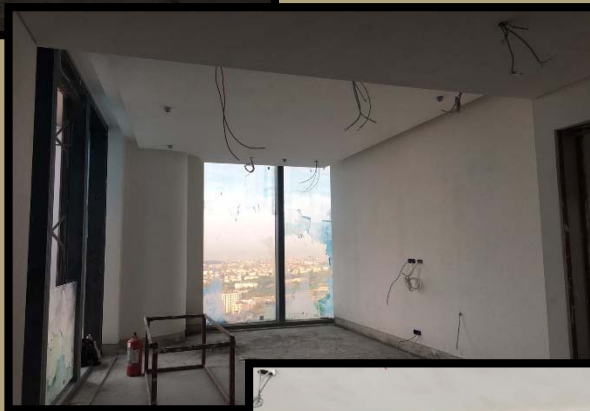


TURN-KEY, FAST TRACK,
FIT-OUT SOLUTIONS





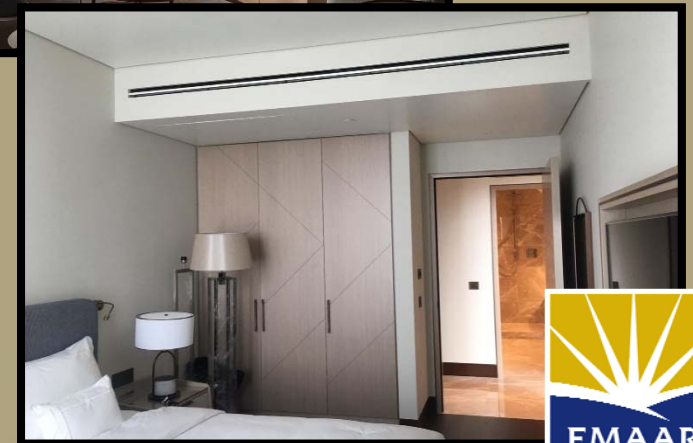
BEFORE → AFTER



BEFORE → AFTER



BEFORE → AFTER





**TURN-KEY, FAST TRACK,
FIT-OUT SOLUTIONS**

HATEKS

EKAT&CUPAL

NEF UPTOWN (MIXED USE COMPLEX) / ALMATY / KAZAKHSTAN

Residential complex Nef Uptown in Almaty is being built in the Nauryzbaysky district at Askarov Asanbay. The new building is located in an ecologically clean area surrounded by green spaces. Nearby are mainly cottage-type houses.

Gross buildable area of the Project is 87 000 sq. meters, including shopping centre. "RAMS Qazaqstan" LLP is the general contractor of the 1st stage of the Project. Gross sellable area is 44 000 sq. meters, including shopping centre, parking zones, storerooms, Foldhome©. Total number of apartments in the 1st stage of the Project is 486.

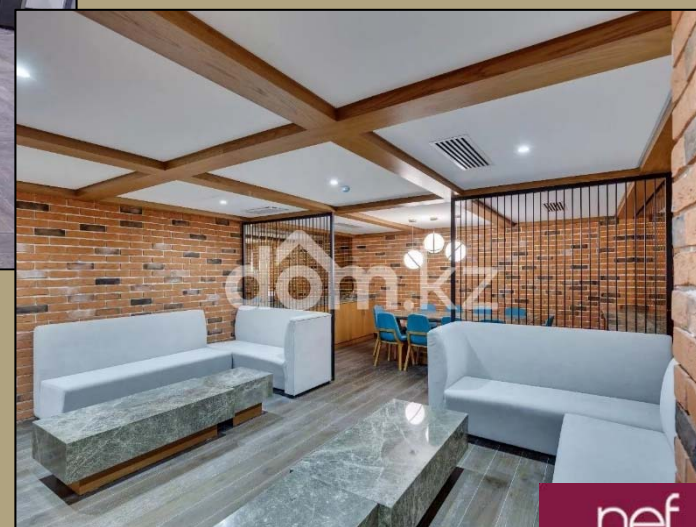
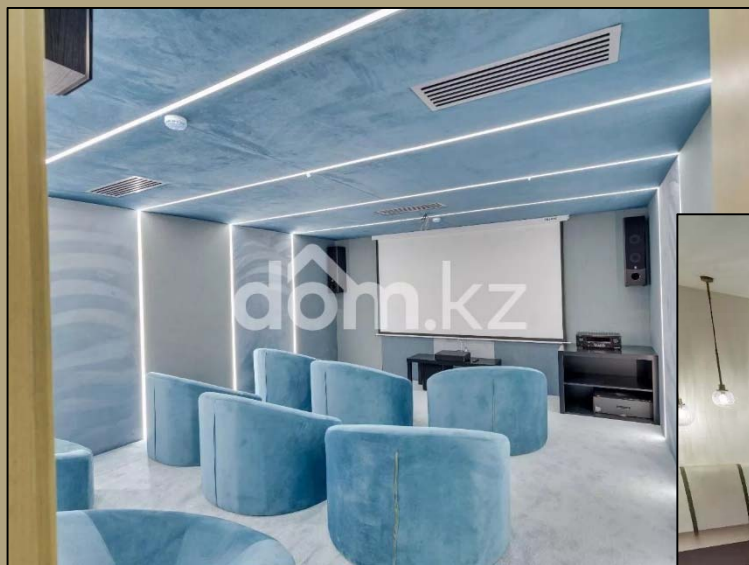
A commercial center with shops, restaurants, cafes and supermarkets is under construction in the Nef Uptown residential complex. For comfortable and productive work, a coworking area will be equipped with a total area of 4,500 square meters.

Another feature of the new building is the FOLDHOME system, developed by Nef, thanks to which residents will be able to use various functional areas outside their apartments. Swimming pool, conference room, home theater, fitness center, music room, banquet hall, wine cellar - all these premises are exclusively for the residents of the complex and their guests.





TURN-KEY, FAST TRACK,
FIT-OUT SOLUTIONS





TURN-KEY, FAST TRACK,
FIT-OUT SOLUTIONS





**TURN-KEY, FAST TRACK,
FIT-OUT SOLUTIONS**



“SHELL OFFICE” -KAZAKHSTAN- ASTANA

Shell is the largest company which has its filials in more than 110 countries all over the world. The company takes part in several projects in Kazakhstan. These projects are The North Caspian project, “Pearl” project, “Arman” project and also the Caspian pipeline consortium.

Design documentation for the repair of office premises of SHELL companies as part of the Multifunctional Hotel Complex with Residential Apartments, located at Astana, Kabanbay Batyr Avenue, No. 1, is made in accordance with the design project, designated by the current regulatory requirements of the Republic of Kazakhstan, within the design boundaries designated for the design task.

The design area is a single office space with equipment for isolated premises for negotiations, meetings, telephone conversations, as well as storage facilities and sanitary facilities.





TURN-KEY, FAST TRACK,
FIT-OUT SOLUTIONS





TURN-KEY, FAST TRACK,
FIT-OUT SOLUTIONS





**TURN-KEY, FAST TRACK,
FIT-OUT SOLUTIONS**

HATEKS

EKAT&CUPAL

**“SEVEN CLUB RESTAURANT”
AT “RITZ CARLTON COMPLEX”
KAZAKHSTAN-ALMATY**

Relaunching the space as their new destination restaurant through adding new key elements such as a dramatic entrance with meat and lobster displays, a feature sushi counter, and new smoking lounge.

Fit-out works and installation of the chandeliers of the restaurant "Seven Clubs" in the complex "Ritz Carlton".

The Client of the project is Capital Partners.

For each area we have developed image boards to explain the look and feel, together with the proposed furniture and lighting style. Furthermore, we have visualized the new key additions. Our brief is to refresh areas of the current Ritz Carlton Seven Club located on the 28th and 29th floor of the hotel.

The spaces will be relaunched as their main restaurant, creating a declinalational offering that will attract both corporate and leisure clientele.





TURN-KEY, FAST TRACK,
FIT-OUT SOLUTIONS

HATEKS
EKAT&CUPAL





TURN-KEY, FAST TRACK,
FIT-OUT SOLUTIONS

HATEKS
EKAT&CUPAL





**TURN-KEY, FAST TRACK,
FIT-OUT SOLUTIONS**

H A T E K S

E K A T & C U P A L

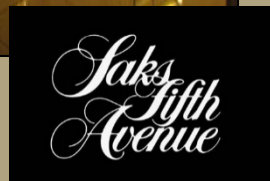
SAKS FIFTH AVENUE KAZAKHSTAN- ALMATY

The tri-level, approximate 9.000m2 store by one of the most largest chain stores of America, is located in the Esentai Shopping Mall which is the first of its kind with the concept of luxury shopping in Kazakhstan. The vertical circulation between floors is provided by the indoor escalators as well as the escalators of the Mall.

The contract was Turn-key type for Fit-out works and as a result of diversity of selected materials, imports was realized from vendors all around the world.

Following successful completion of the project, the company was awarded for FIT-OUT works of Louise Vuitton, Ralph Lauren, Gucci, Dolce Gabana and Loro Piana by the same Client at the same Mall. All stores were successfully completed and put into service.

*Completed while working as Managing Partner and Project Manager at DKD YAPI.





TURN-KEY, FAST TRACK,
FIT-OUT SOLUTIONS

HATEKS

EKAT&CUPAL





TURN-KEY, FAST TRACK,
FIT-OUT SOLUTIONS

HATEKS

EKAT&CUPAL

**"BRONZE JEWELLERY NODE" / "ESENTAI MALL"
KAZAKHSTAN-ALMATY**

In the separate section "Jewell" of the shopping center "Esentai Mall", the Fit-out Works of the boutiques "DOMIANI", "ERWIN SATTLER", "BVLGARI", "POMELATTO", "CHAUMET" were installed.

The interior decoration of the glass interior is made as part of the contract.





TURN-KEY, FAST TRACK,
FIT-OUT SOLUTIONS

H A T E K S

E K A T & C U P A L

«BURGER KING» Astana - KAZAKHSTAN

The Contract covers conversion of 200m² spare area in the shopping center "Maxima" into a restaurant of largest network of American fast food "Burger King" including all the mechanical, electrical, facade, installation works and kitchen installation on Turn-key basis.





TURN-KEY, FAST TRACK,
FIT-OUT SOLUTIONS

H A TEKS

EKAT&CUPAL

“FORUM ALMATY” MALL (TURKMALL) KAZAKHSTAN-ALMATY

The largest group of shopping centers "FORUM" in Turkey, which build a large shopping center "FORUM Almaty". The area is -150 000m2.

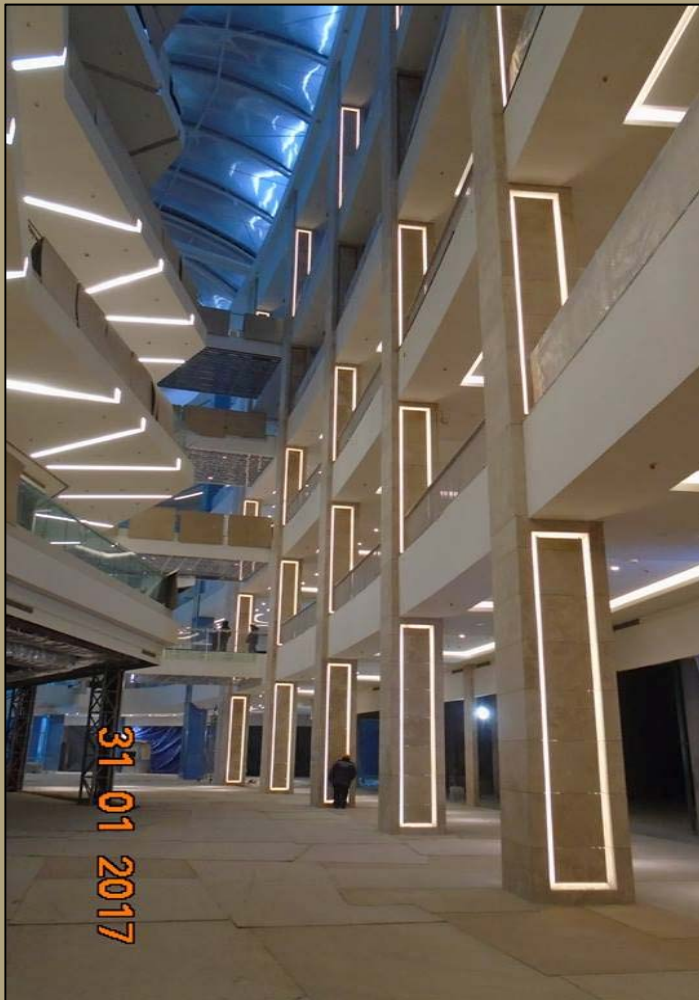
All finishing work is carried out, including materials.

The shopping center entered service in September 2016.





TURN-KEY, FAST TRACK,
FIT-OUT SOLUTIONS



OUR ACTIVITY AREAS :



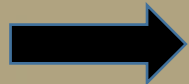
PROPERTY DEVELOPMENT



TURN-KEY, FAST TRACK, FIT-OUT SOLUTIONS



CURTAIN DESIGN & APPLICATIONS 



HOTEL TEXTILE 



STRUCTURAL WORKS



CURTAIN DESIGN & APPLICATIONS EKAT & CUPAL

HATEKS

EKAT&CUPAL

EKAT Tekstil A.Ş.

EKAT TEXTILE CO. has been continuing its operations in the production of soft furnishings and drapery with its unique pattern and color scale in home textile world for 37 years based on ISTANBUL-TURKEY.

EKAT TEXTILE CO. has gained the position of an editor in the covering world in project specifications under the name of Design Center by EKAT with its Turkey-Turkic Republics. Distributorship of **SILENT GLISS** window treatments in the field of domestic and overseas hotel clothing over and design with the distributorships and partnerships of the editor firms by combining the experiences, experimentation gained in order to form a centralized integrity by following the developments in the contract sector. The residences, call centers, skyscrapers, hotel chains, centers of general management, motorboats and yachts which we decorated with flameproof drapery, high performed leathers-fabrics and acoustic ceiling-wallboards show our reference list in the field and application of the new technology products show our leader position in the sector.

Our Product Range :

- Upholstery fabric production
- Curtain fabric production
- Wallpaper and wallcovering
- Acoustic wall panels
- Leather genuine
- Artificial leather
- Curtain systems –tracks-motorized –automation system –sun control
- Carpet –hand tufted and wall to wall
- Soft furnishing products
- Floor coverings –leather-vinyl
- Curtain stitching and fitting
- Outdoor fabrics
- Hospital fabrics and curtain cubicle tracks
- Fire stop curtains
- Aluminum mesh panels
- Antibacterial fabrics
- Flame-retardant fabric productions
- Curtain installation maintenance service





CURTAIN DESIGN & APPLICATIONS REFERENCES

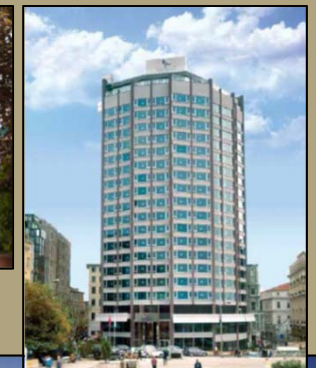
HATEKS

EKAT&CUPAL

CONRAD OTEL renovation ISTANBUL (2013-2014)
 THE MARMARA TAKSIM renovation (2014-2015)
 NOVOTEL ISTANBUL renovation (2014)
 FOUR SEASONS BOSPHORUS ISTANBUL renovation (2014)
 NOVOTEL TRABZON renovation (2015)
 SWISSOTEL THE BOSPHORUS LOFT APARTMENTS (2015)
 WHITE CITY BOULEVARD HOTEL BAKU (2015)
 HILTON GARDEN INN BEYLIKDUZU (2015)
 RADISSON BLU LEOGRAND HOTEL CHISINAU MOLDOVA (2016)
 HYATT REGENCY TASHKENT OZBEKISTAN (2016)
 HAMPTON by HILTON KURTKOY (2016)
 HAMPTON by HILTON ZEYTNBURNU (2016)
 HILTON GARDEN INN ESKISEHIR (2016)
 HYATT HOTEL BAKU AZERBAIJAN renovation (2016)

BAKU CONVENTION CENTER AZERBAIJAN (2016)
 HAMPTON BY HILTON KAHRAMANMARAS (2016)
 HAMPTON BY HILTON ALIAGA IZMIR (2016)
 HAMPTON by HILTON BOLU (2016)
 HILTON GARDEN INN ADIYAMAN (2017)
 HAMPTON by HILTON GAZIANTEP renovation (2017)
 SHERATON OTEL ASTANA KAZAKHISTAN(2017)
 SHERATON BATUMI GEORGIA (2018)
 SAMSUNG HQ TORUN CENTER ISTANBUL(2018)
 DOUBLETREE by HILTON KARTEPE (2018)
 DOUBLETREE by HILTON ADANA (2019)
 BADU FISCHI ALIBEY MALDIVES (2019)
 THE ALCRON HOTEL PRAGUE (2019)
 COURTYARD by MARRIOTT CHISINAU (2019)
 THE ONE&ONLY PORTONNOVI MONTENEGRO (2020)

THE CRATON HOTEL ISTANBUL (2020)
 MALLDOVA MALL CHISINAU MOLDOVA (2020)
 AL WAJBA PALACE DOHA (2020)
 MERCURE ISTANBUL SIRKECI (2020)
 IBIS STYLES ISTANBUL MERTER (2021)
 EMAAR RESIDENCES&HOTEL ISTANBUL(2020-2022)
 JW MARRIOTT HOTEL THE MARMARA SEA (2021-2022)
 THE ART HOTEL PUBLIC AREAS BUDAPEST (2022)
 POLAT SKI OTEL PALANDOKEN (2022)
 AMAZON HEAD OFFICE ISTANBUL (2022)
 AMAN HOTEL NEWYORK USA (2022)
 JOALI MALDIVES RAA ATO LL MALDIVES (2021-2022)
 IBIS MARCORY, IVORY COAST-AFRICA (2022)
 IBIS PLATEU, IVORY COAST-AFRICA (2022)
 FOUR SEASONS BOSPHORUS ISTANBUL RENOVATION (2022)





CURTAIN DESIGN & APPLICATIONS REFERENCE VISUALS

HATEKS

EKAT&CUPAL



JOALI MALDIVES RAA ATOLL



JW MARRIOTT HOTEL THE MARMARA SEA



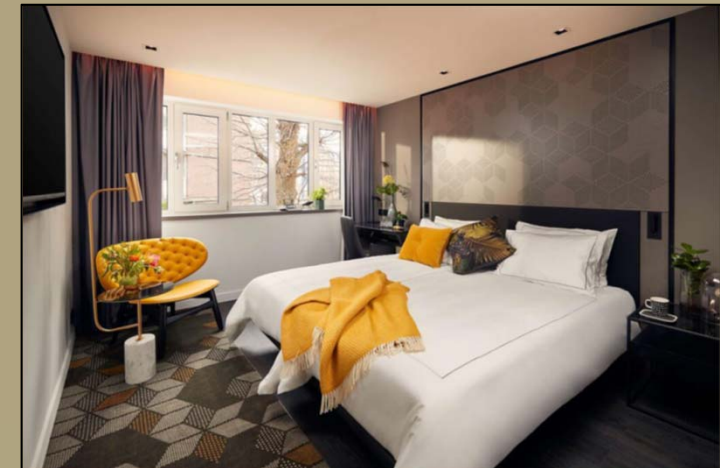
EMAAR SQUARE RESIDENCES & ADDRESS HOTEL



COURTYARD byMARRIOTT CHISINAU



THE ONE&ONLY PORTONОВI MONTENEGRO



PARK PLAZA VONDELPARK AMSTERDAM



PORT BAKU LEISURE CLUB AZERBAIJAN



PORT BAKU LEISURE CLUB AZERBAIJAN



PORT BAKU RESIDENCE BUMBLEBEE MONTESSORI AZERBAIJAN



LE MERIDIEN HOTEL ISTANBUL



RIXOS THERMAL HOTEL ESKISEHIR



HILTON GARDEN INN ISTANBUL BEYLIKDUZU



CURTAIN DESIGN & APPLICATIONS REFERENCE VISUALS



HYATT REGENCY GRILL RESTAURANT BAKU AZERBAIJAN



HILTON GARDENINN KUTAHYA



LE MERIDIEN HOTEL ISTANBUL



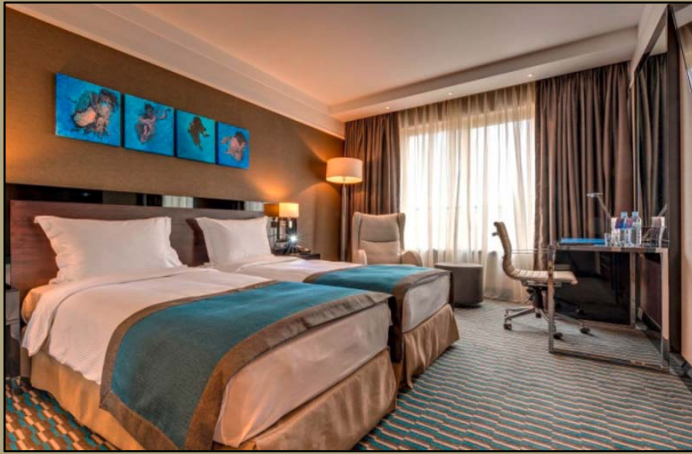
HILTON GARDEN INN ISTANBUL BEYLIKDUZU



NOVOTEL ISTANBUL



NOVOTEL TRABZON



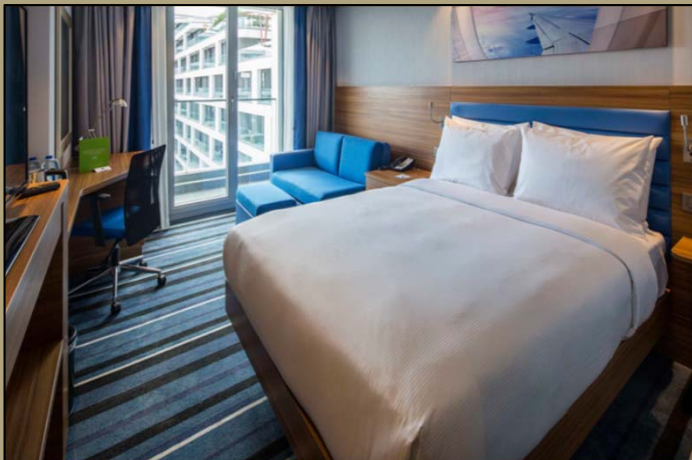
RADISSON BLU LEOGRAND HOTEL CHISINAU MOLDOVA



RADISSON BLU LEOGRAND HOTEL CHISINAU MOLDOVA



RADISSON BLU LEOGRAND HOTEL CHISINAU MOLDOVA



HAMPTON by HILTON ISTANBUL KURTKOY



HAMPTON by HILTON ISTANBUL KURTKOY



HAMPTON by HILTON ISTANBUL KURTKOY



CURTAIN DESIGN & APPLICATIONS REFERENCE VISUALS

HATEKS

EKAT&CUPAL



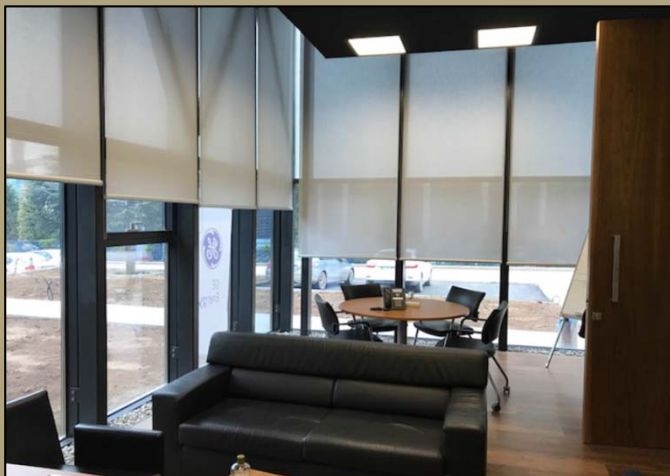
HAMPTON by HILTON ISTANBUL ZEYTINBURNU



HILTON GARDEN INN ESKISEHIR



HAMPTON by HILTON IZMIR ALIAGA



ENKA ADAPAZARI COMBINED CYCLE POWER PLANTS



HAMPTON by HILTON KAHRAMANMARAS

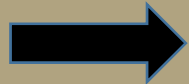


DOUBLETREE by HILTON ADANA

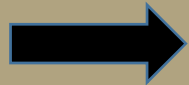
OUR ACTIVITY AREAS :



PROPERTY DEVELOPMENT



TURN-KEY, FAST TRACK, FIT-OUT SOLUTIONS



CURTAIN DESIGN & APPLICATIONS 



HOTEL TEXTILE 



STRUCTURAL WORKS



**HOTEL TEXTILE
HATEKS**

HATEKS

EKAT&CUPAL

HATEKS HATAY TEKSTİL İŞLETMELERİ A.Ş.

HATEKS is a major manufacturing company engaged in production and export of textile articles produced in its fully integrated factory which was established in 1973 and is situated in Antakya, Hatay, Turkey. The main exported articles are TOWELS, BATHROBES, BATHMATS, and COTTON & BLENDED YARNS. All of the phases of the production from purchasing of the best cotton fibre to 'the end product', and packaging are processed under one roof.

The integration is our key to the quality in our products and services. The cotton fibre is spun in our own spinning mill and the whole process of weaving, dyeing, finishing and making-up (confection) is done in the same premises. Our long term clients have certified the high quality of our yarns, from both domestic and foreign weaving and knitting industries, since the establishment of our mill.

Our fully integrated chain of production uses modern machinery (on average no more than 3 years old) with the latest technologies, which are being constantly improved both in capacity and in quality through new investments.

Ongoing quality control of the terry fabric through tests and controls from the making-up (confection) to the packaging of towels and bathrobes, ensures improved quality and customer satisfaction.

Our tools of production and order processing are flexible enough to adapt all kinds of customers' demands -be it from department stores, big retailers, wholesalers or fine linen brands from European or North American countries.

With 30 years of experience, serving both domestic and foreign textile industries, our main goal in the Export Market, with our highly skilled staff, totally integrated philosophy, is to be renowned as a quality supplier.



SIRETEX – SENSEI

Joint venture home textile company in Paris, France. It is a firm that can produce either for its own brand "Sensei" or for other brands.

COTONELLA

Joint venture home textile company in Paris, France. Design, creations, marketing and wholesale of towels & bathrobes. Also hotel line and institutional towel supplying available.



HATEKS facilities lay on more than 760.000m2 area including 60.000m2 covered production lines in Antakya /Turkey.

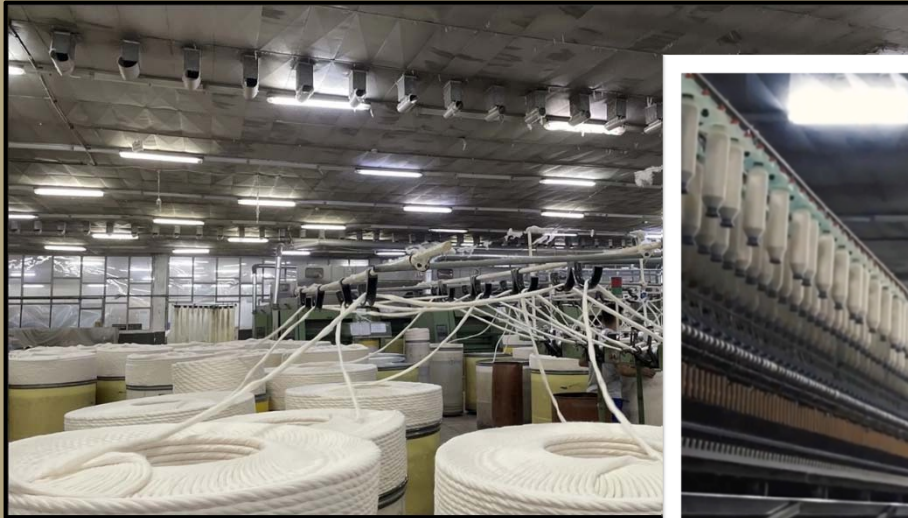




HOTEL TEXTILE
FACILITIES

HATEKS

EKAT&CUPAL





**HOTEL TEXTILE PRODUCTS FOR
BEDROOM & SPA & BATHROOM & RESTAURANTS**





HOTEL TEXTILE
REFERANCES

HATEKS

EKAT&CUPAL

ELIS



BALMAIN



ARENA

EL CORTE INGLES



TCHIBO

CARREFOUR



ALDI



METRO

MAXX ROYAL
RESORTS

Carrefour

IKEA

MAXX ROYAL RIXOS



GLORIA HOTEL

ASTERIA HOTEL

LETONIA FETHİYE



LETOONIA
CLUB-HOTEL
FETHİYE-DUĞLA



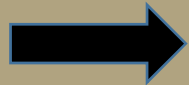
OUR ACTIVITY AREAS :



PROPERTY DEVELOPMENT



TURN-KEY, FAST TRACK, FIT-OUT SOLUTIONS



CURTAIN DESIGN & APPLICATIONS

The logo for EKAT&CUPAL, featuring the text 'EKAT&CUPAL' in white on a blue and green background.

HOTEL TEXTILE

The logo for HATEKS, featuring the text 'HATEKS' in white on a dark blue background.

STRUCTURAL WORKS

“NATIONAL INTEREST MARKET & TRUCK STATION PROJECT SENEGAL- DAKAR

Within Doğanlar Investment Holding, all reinforced concrete road, flooring and finishing works of the project that the DM Investment undertakes are done by us. The summary of the works that are completed and under process by our company regarding the project are as follows;

- 53.426 m² frameworks
- 1.109 tonnes structural rebar
- 13.217 m³ structural concrete
- 128.513 m² road concrete/pavement
- 24.248 m² floor hardener concrete
- Insulation Applications (liquid insulation, bituminous insulation, TPO membrane insulations.)
- Gypsum Plaster, paint insulations.
- Drywall and Armstrong suspending ceiling insulations.
- Ceramic coating insulations.



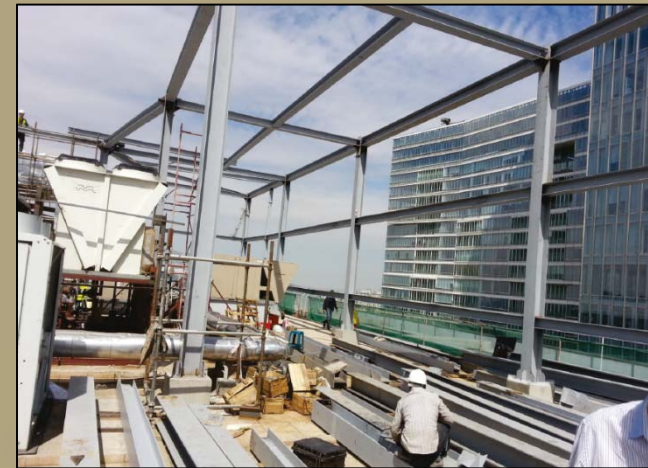
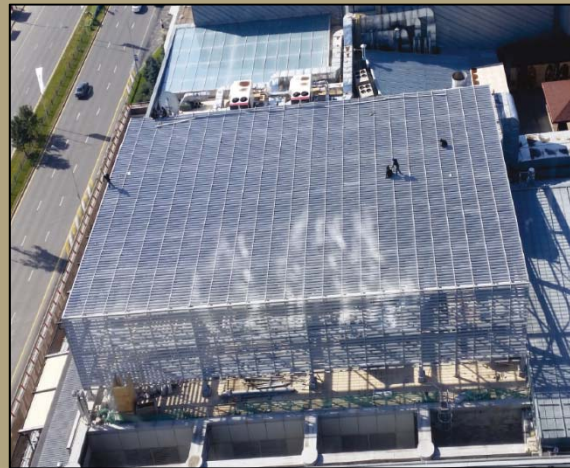


METAL CONSTRUCTION AND ALUMINUM SOLAR PROTECTION ON THE ROOF OF «ESENTAI MALL»

The contract covers design, production and installation of 55 tons of Steel Structure and 1300 m² of Aluminium Solar Protection Grids in order to protect the mechanical system components on the roof " Esentai Mall " in Almaty.

Completed works cover :

- Steel Structure
- Fireproof Dye Coating
- Concrete Footings
- Grouting Under Metalware
- Basic Waterproofing Works.
- Ceramic Finishing Works
- Mounting of Aluminum Solar Protection Grids





SOLUTION PARTNERS

HATEKS

EKAT&CUPAL



USA



ENGLAND



DENMARK



NETHERLANDS



RUSSIA



FRANCE



GERMANY



GERMANY



USA



NETHERLANDS



Wisconsin- USA



ITALY



USA



USA



AUSTRALIA



ITALY



TURKEY



SWITZERLAND



CALIFORNIA -USA



CONTACT INFORMATION

HATEKS

EKAT&CUPAL

CENTER OFFICE :

*ATAŞEHİR MAHALLESİ, SEDEF CADDESİ 38.ADA
ATA BLOKLARI 3/1 DAİRE NO:167
ATAŞEHİR/ İSTANBUL/ TÜRKİYE*

WEB:

www.aroyapi.com.tr

<https://www.linkedin.com/company/arogarant>

TEL :

+90 216 456 75 65

